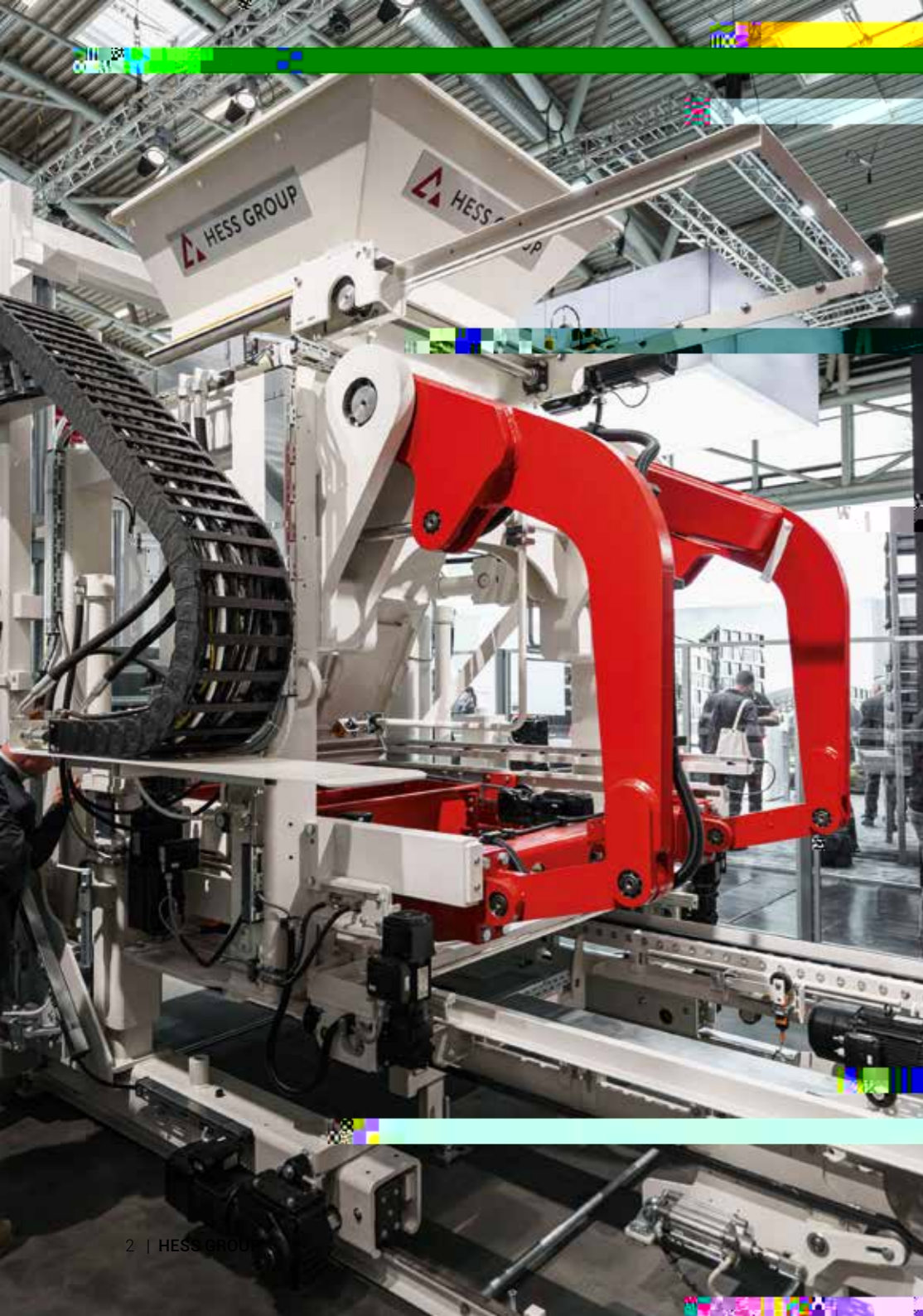


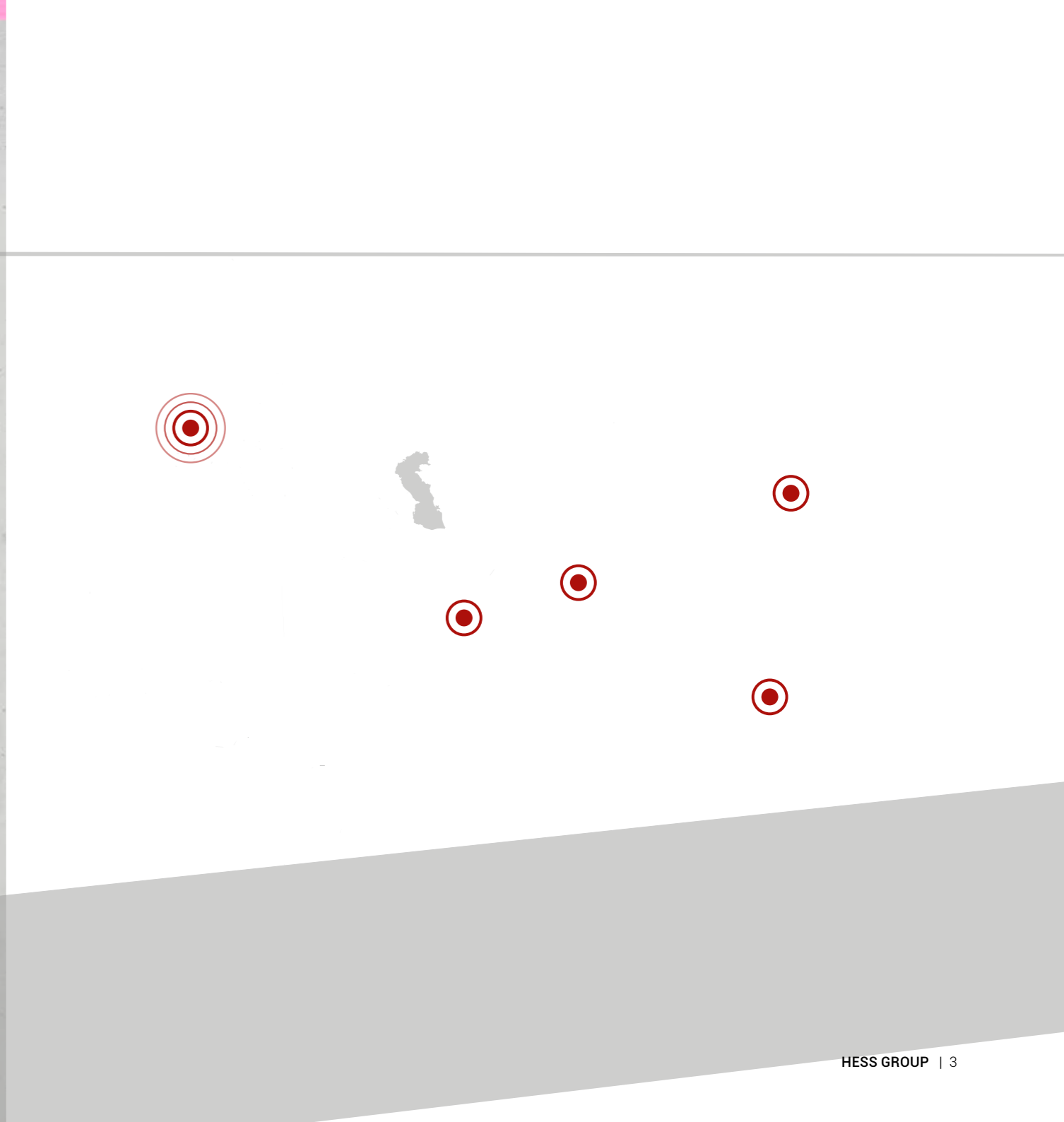
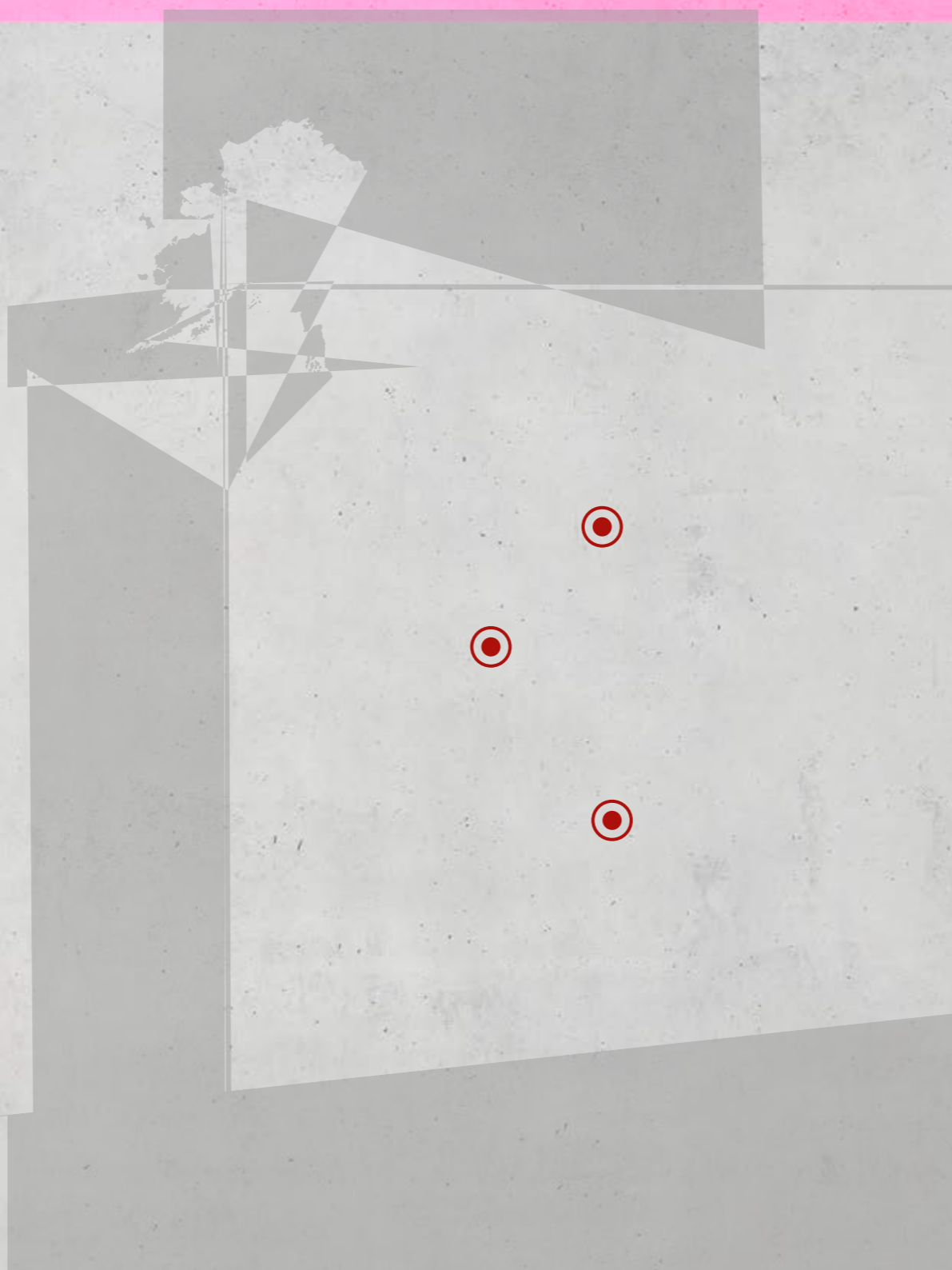


HESS GROUP



100%

100%





blocks and pavers efficiently. The following four factors are paramount:

Product

Each of our products is developed specifically according to our customers'

Customers

Team

Individual Action



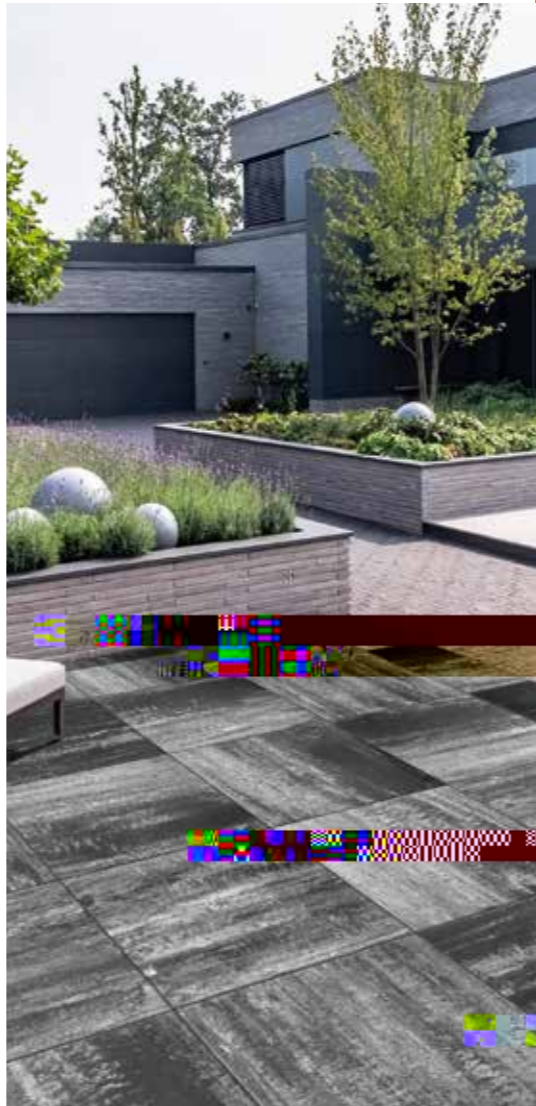
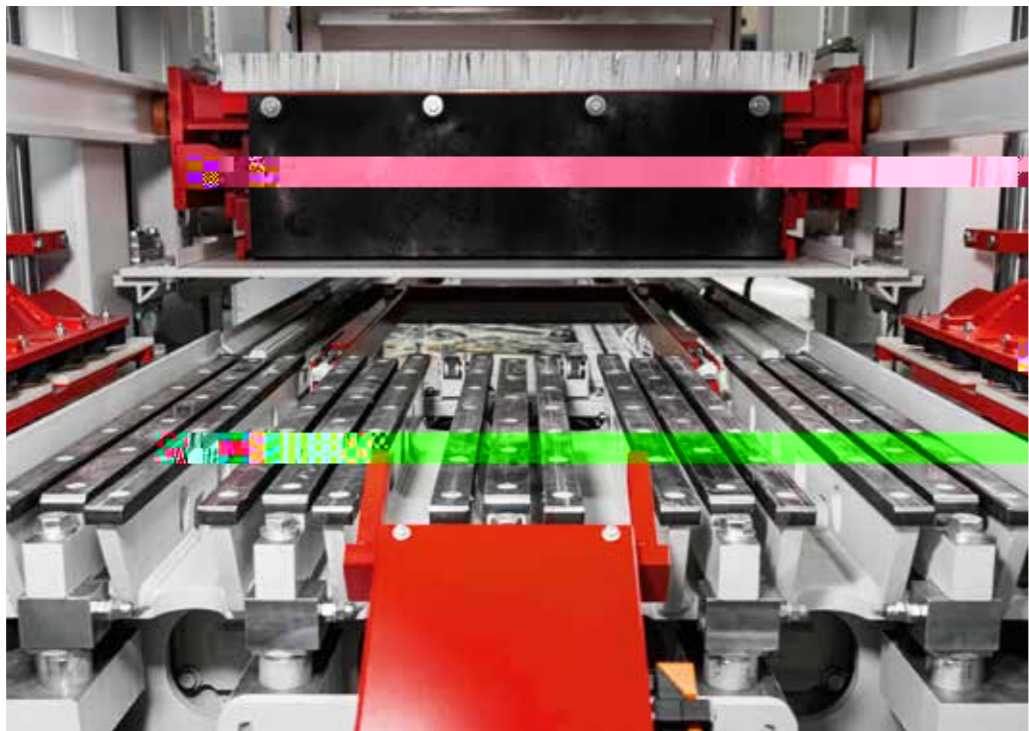
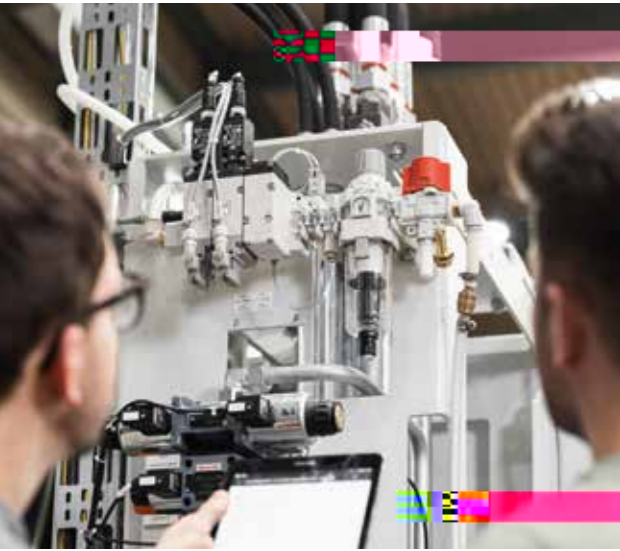
Quality

Innovation

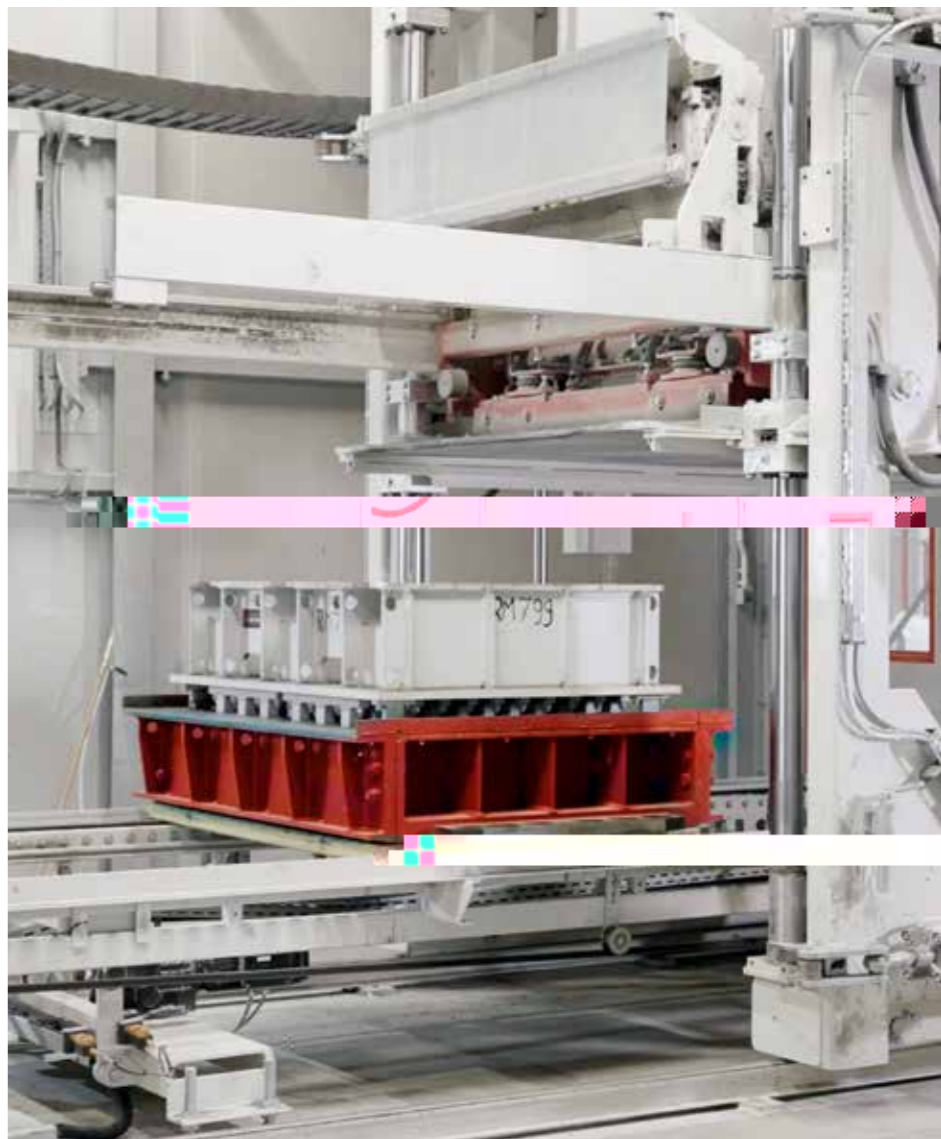
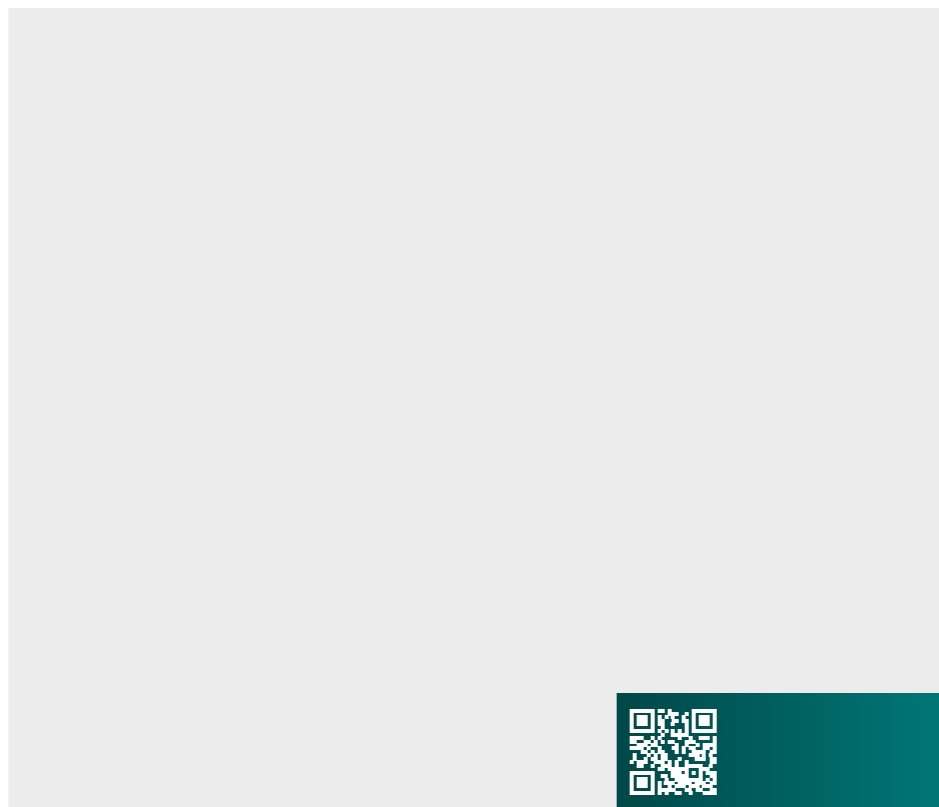
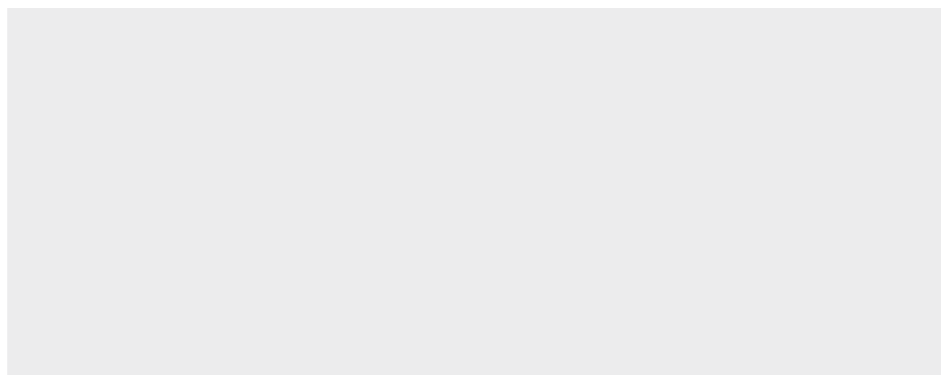
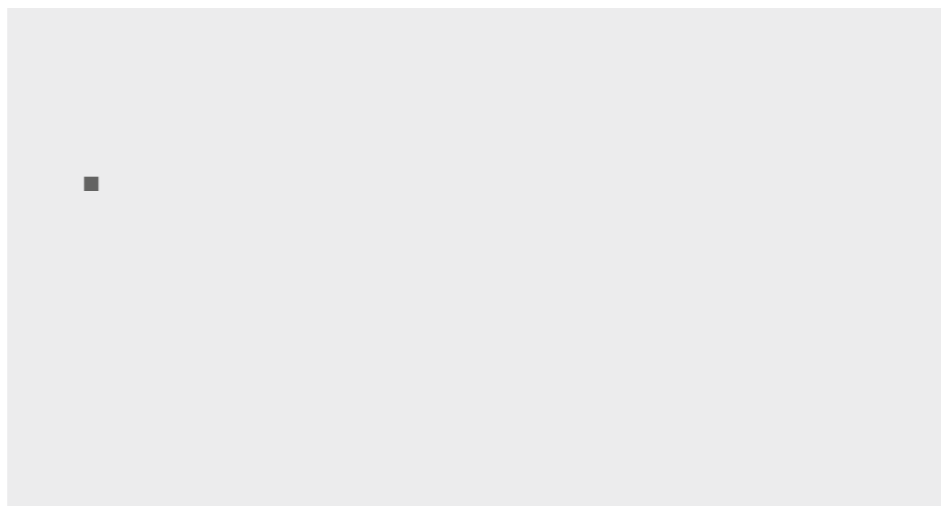
Customer Focus

In partnership with our customers, we fulfill individual

refinement options, we ensure the long-term viability of



CONCRETE BLOCK AND PAVER MACHINE





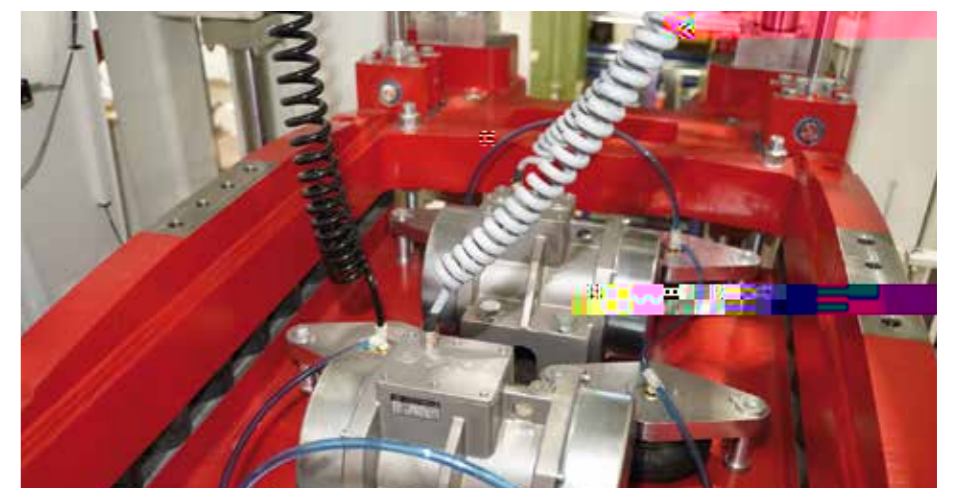
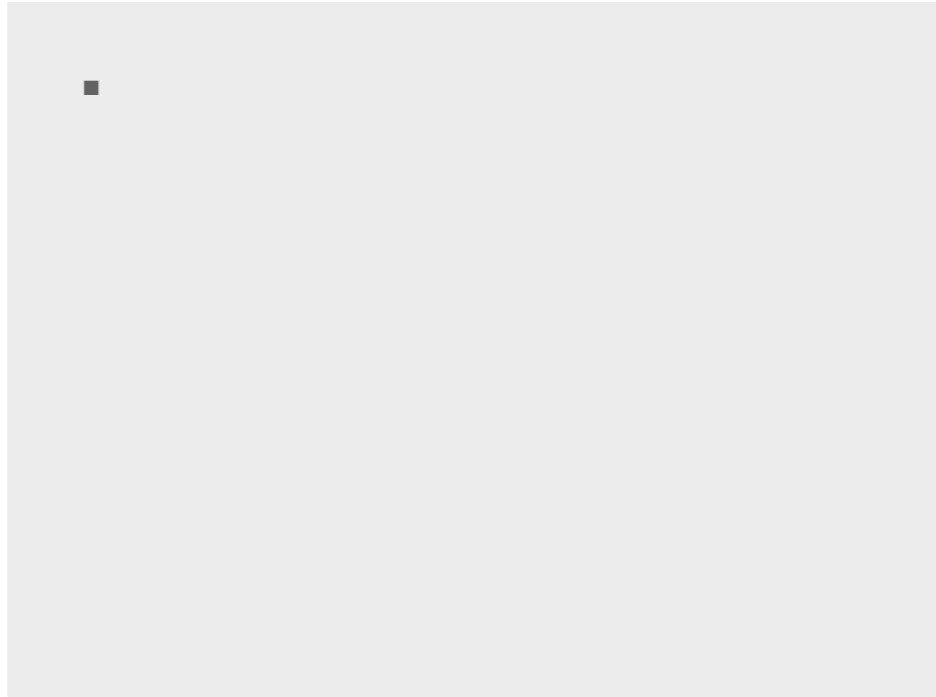
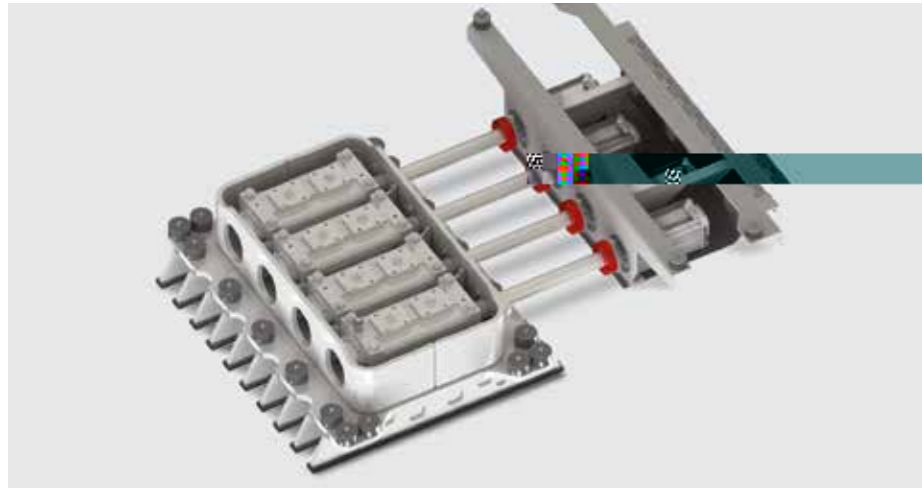
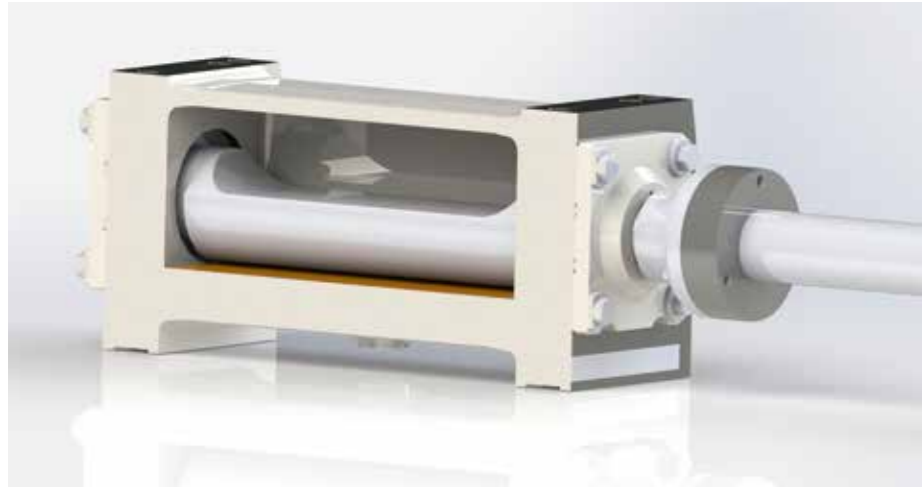
CONCRETE
BLOCK AND
PAVER MACHINE

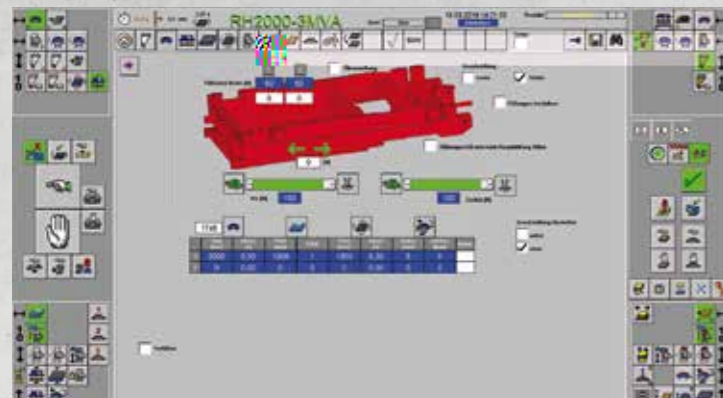
CONCRETE BLOCK AND PAVER MACHINE

HESS GROUP

HESS GROUP

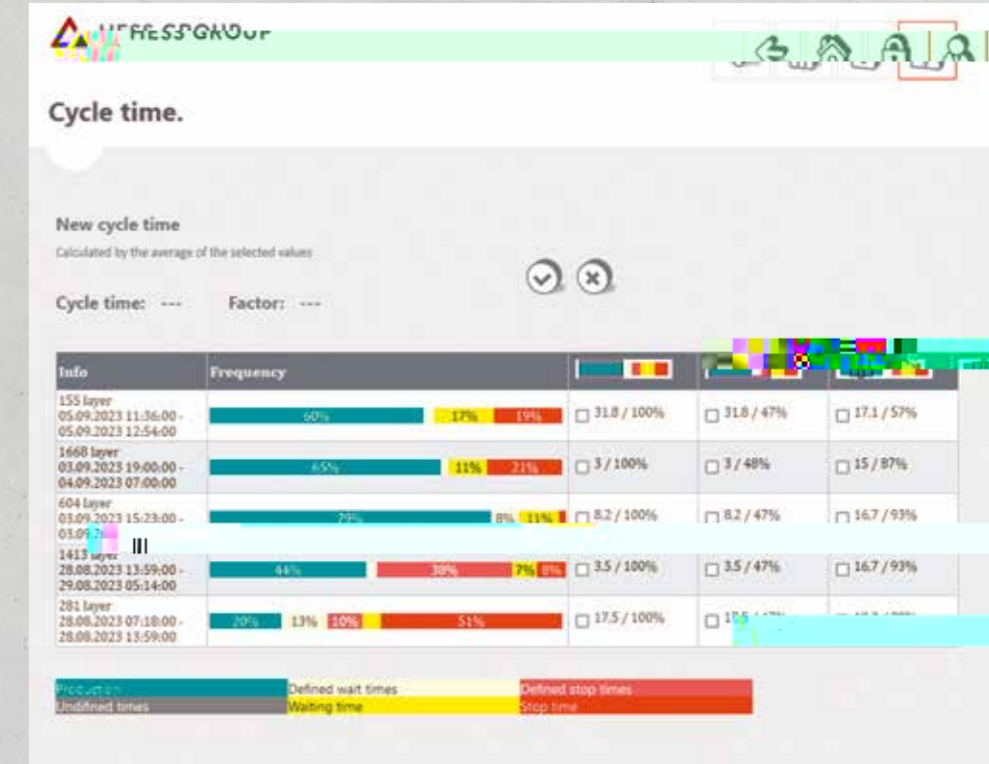
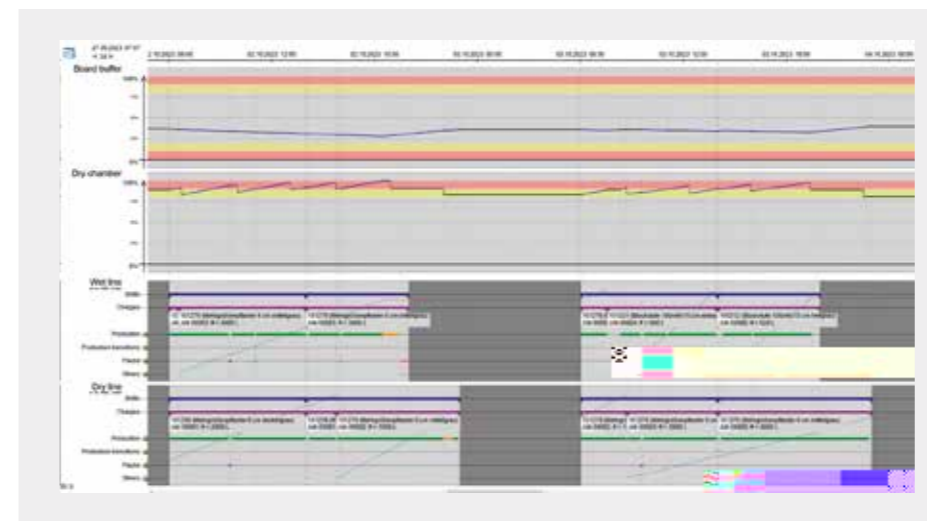
COMPONENTS

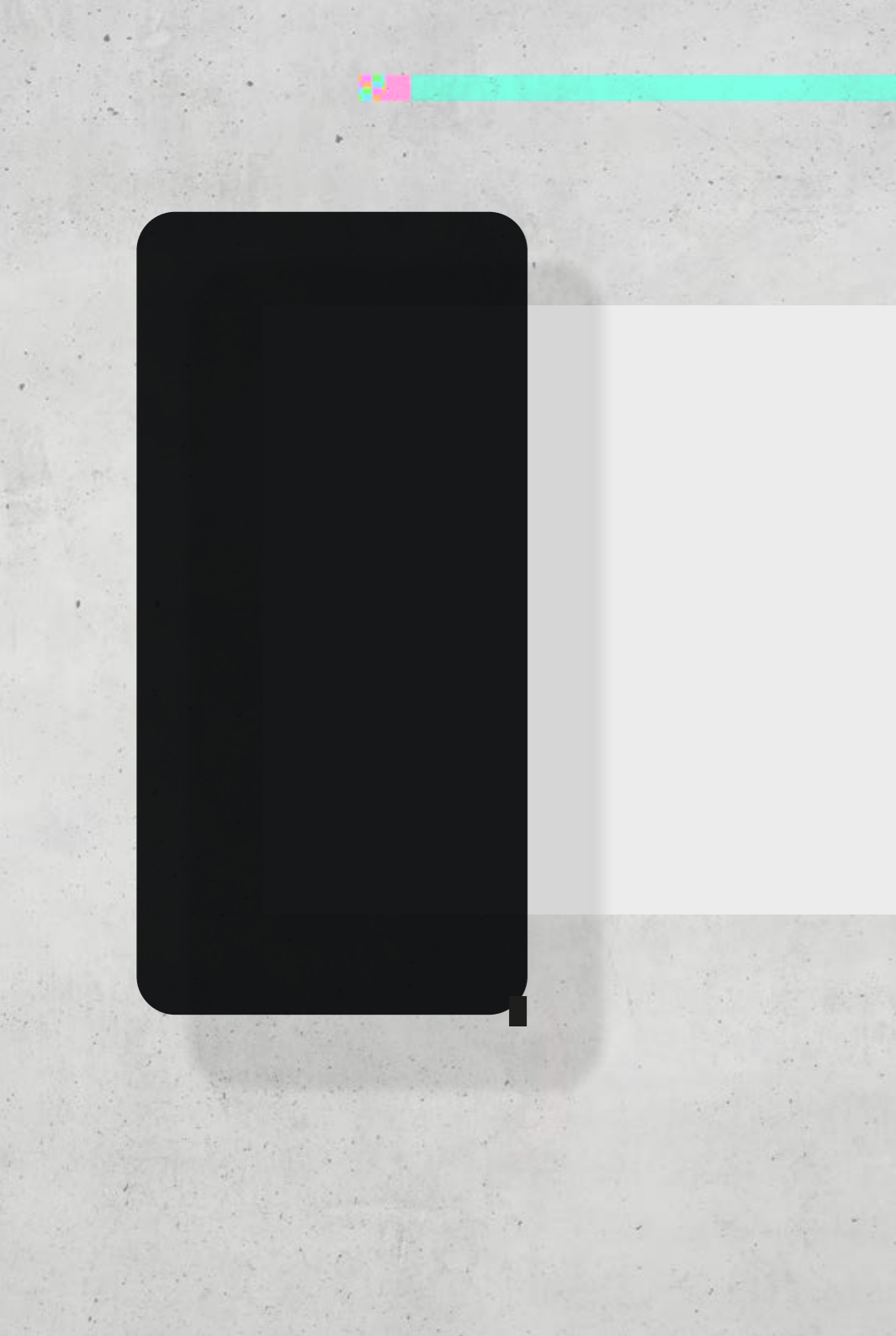


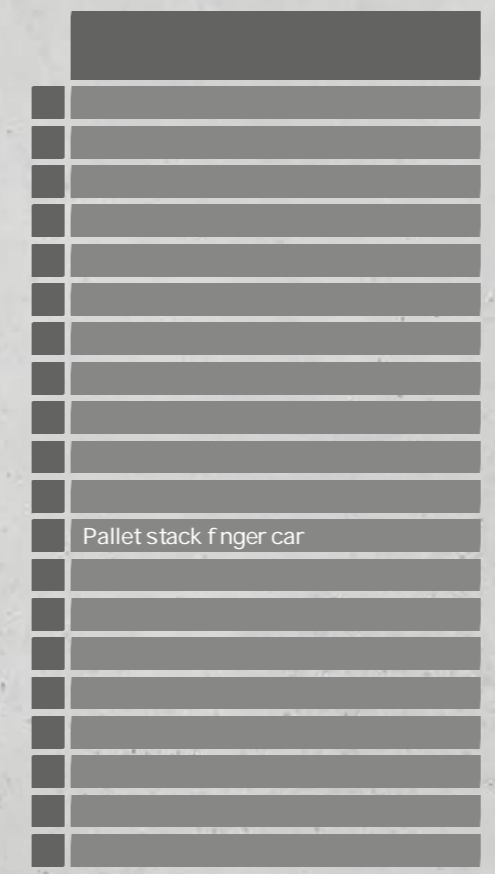
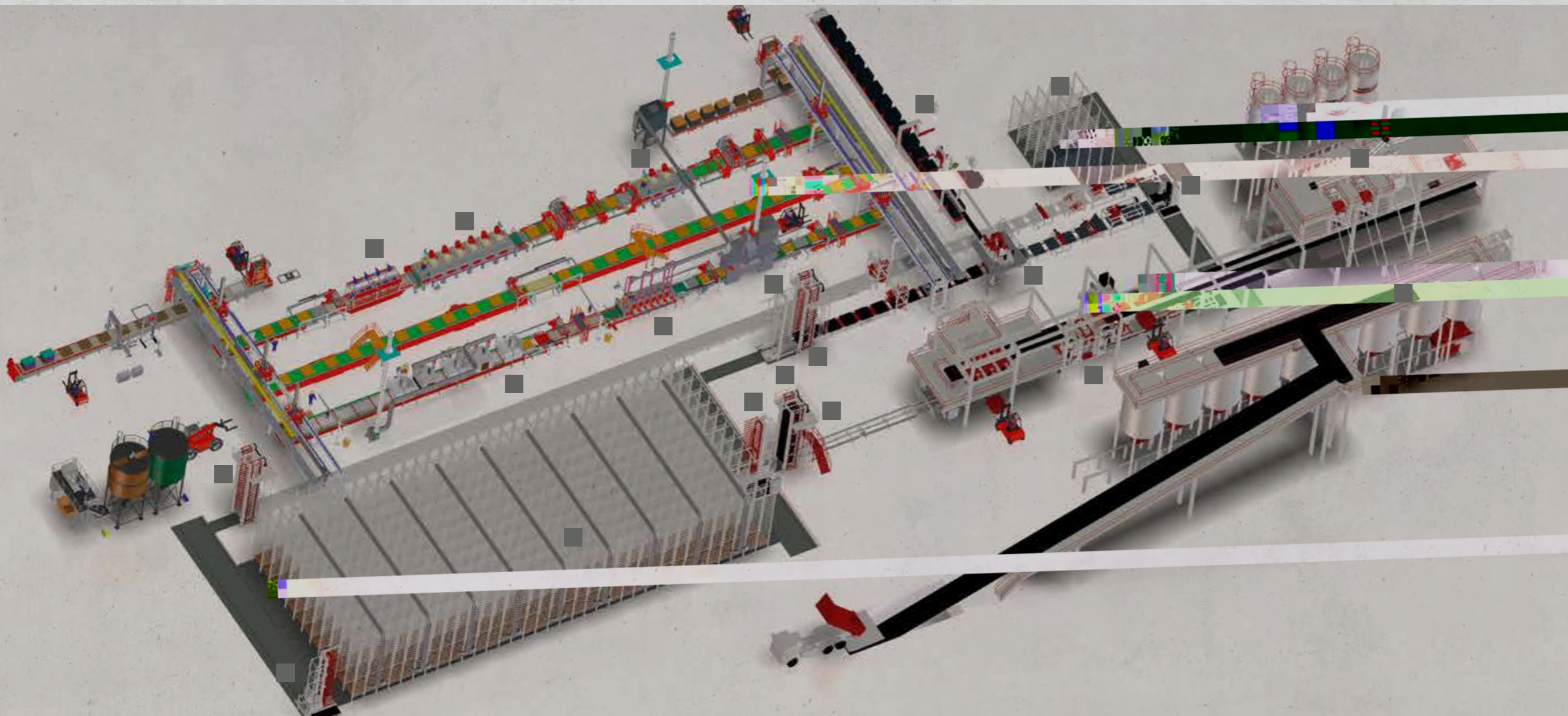


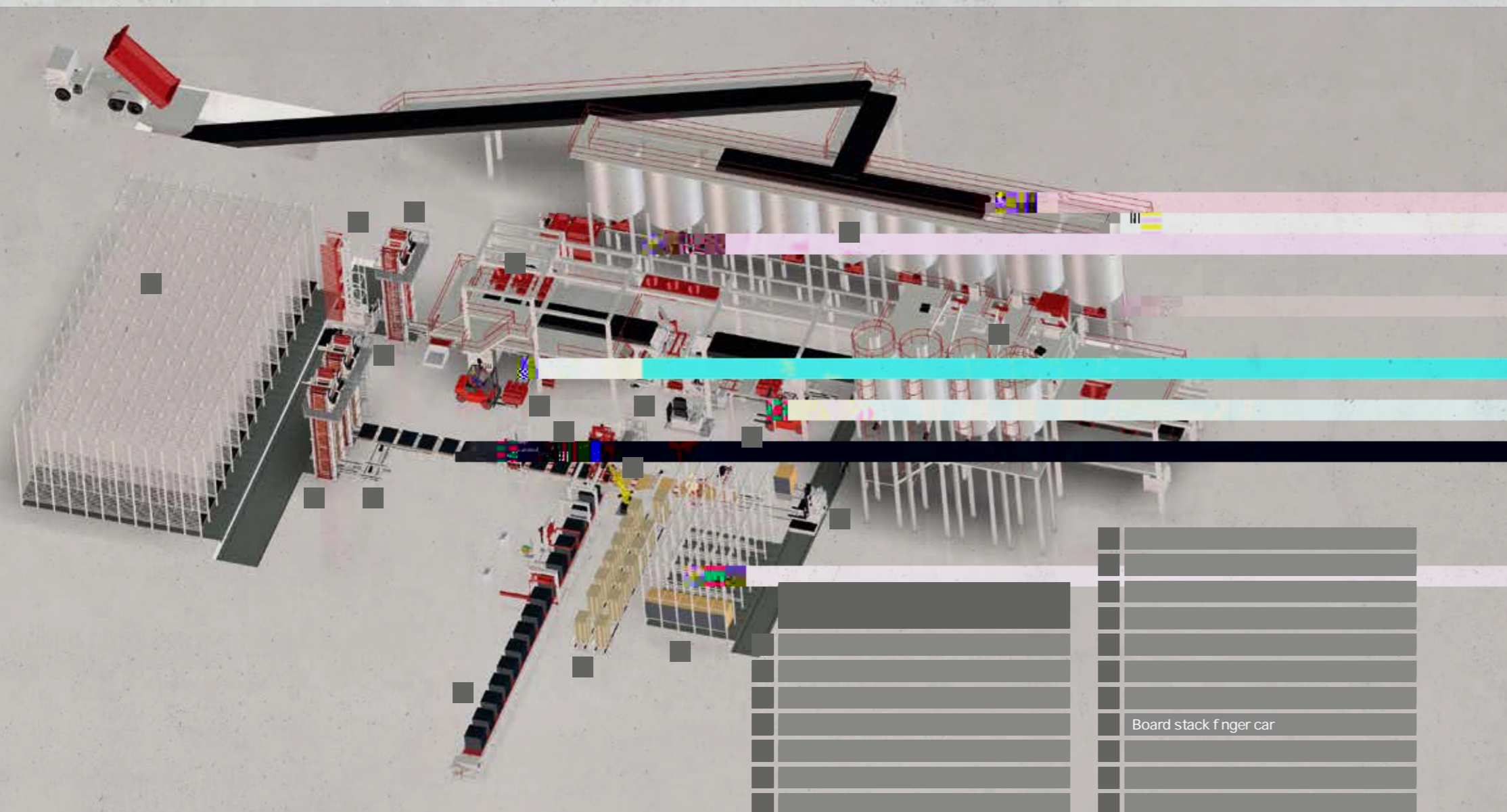
PIMS can be used for optimized plant utilization and efficient personnel planning for

The intuitive user interface with icons simplifies operation. Complicated inputs are eliminated.

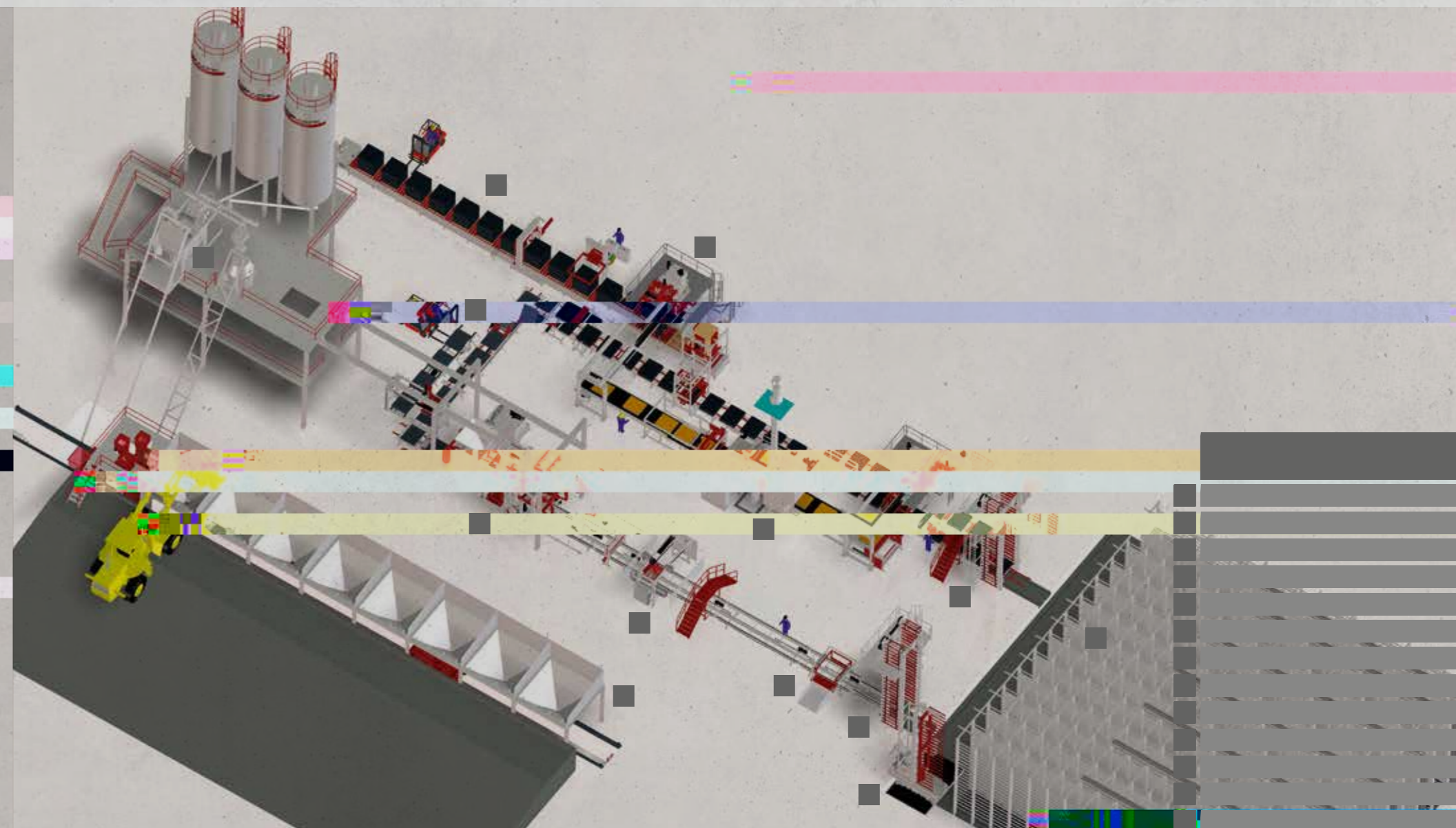


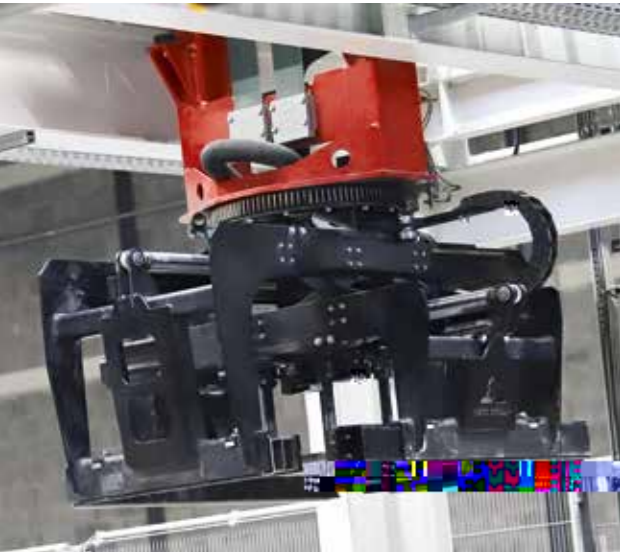




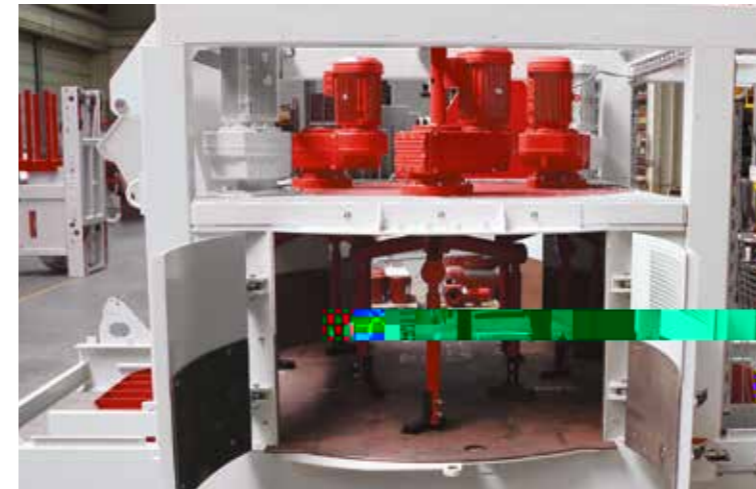
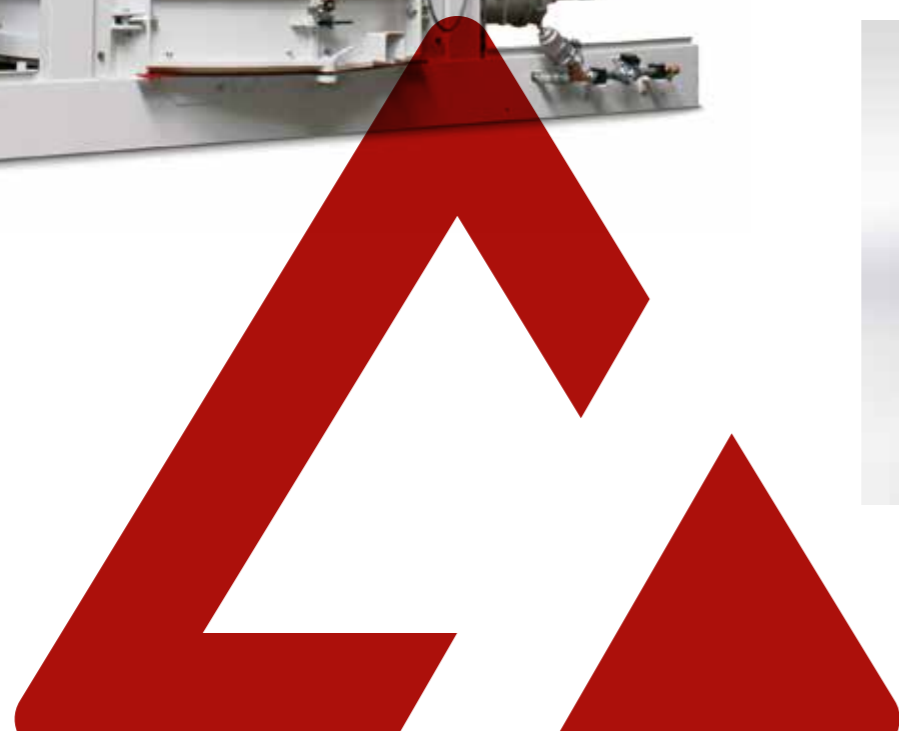


Board stack finger car



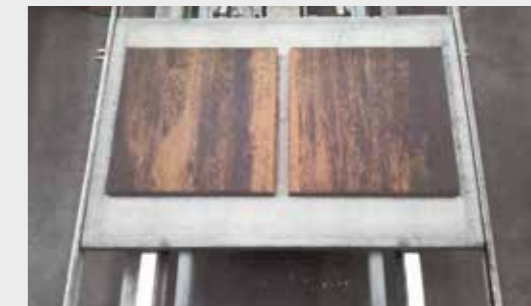


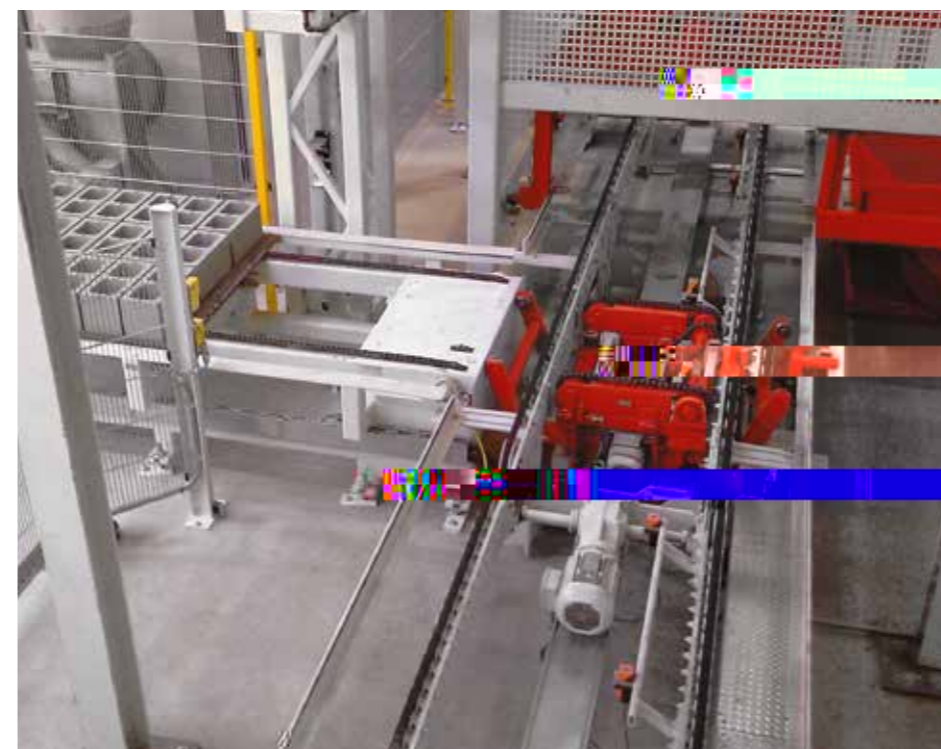
SPECIAL PLANTS



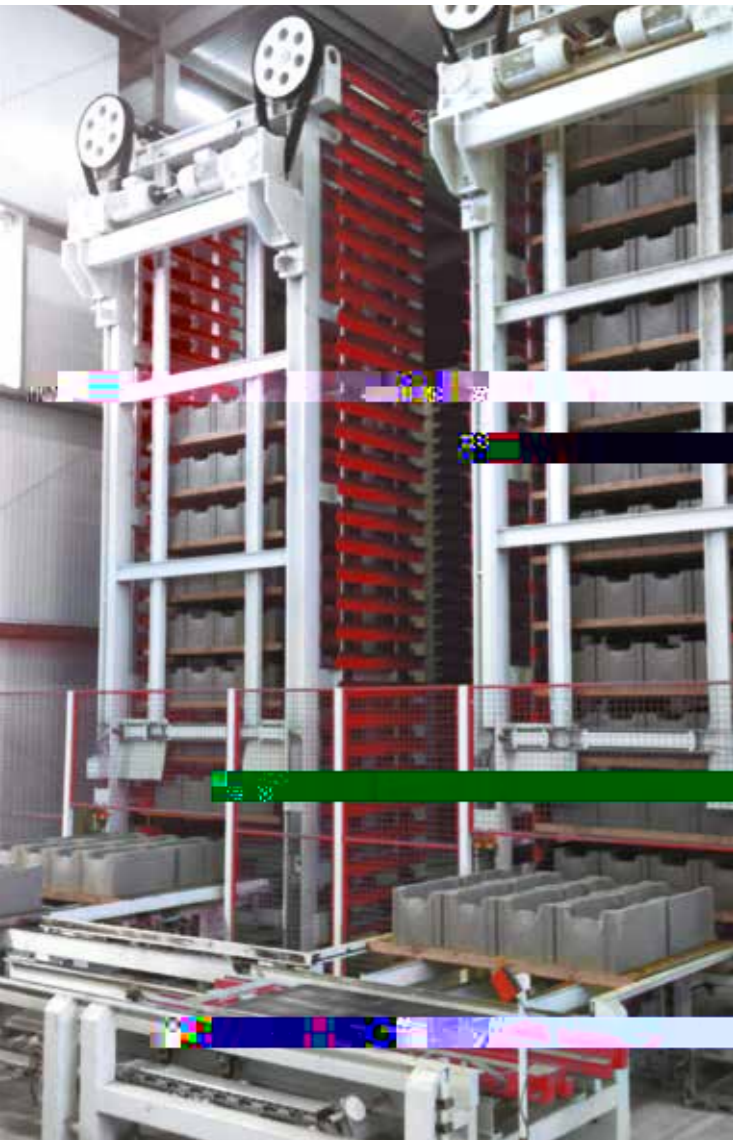
Dry filling [l]									
Max. filling weight [kg]									

-
-
-
-
-
- Significantly less concrete residue and
-
-



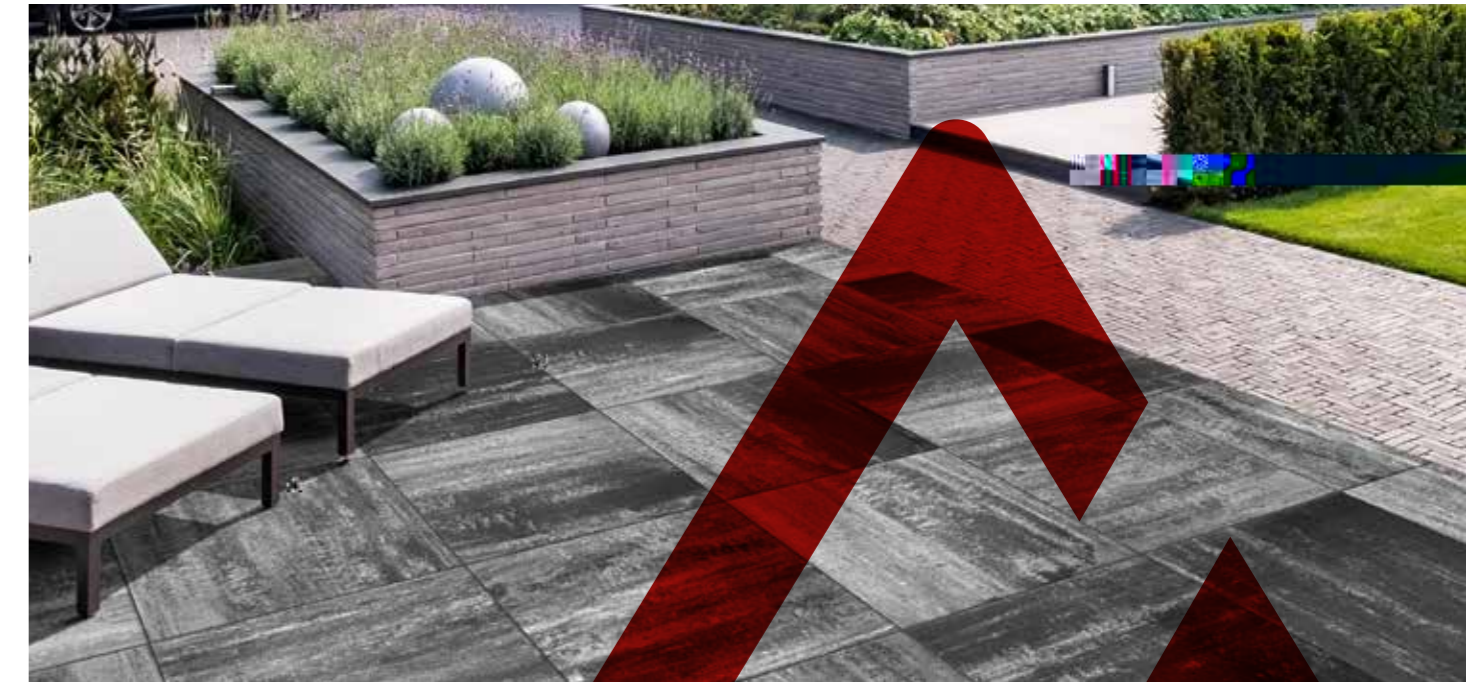


hensive quality control on the wet side. Advantage: Production continues uninterrupted



Increases chamber capacity with a customer-specific storage configuration.

Increases the efficiency of the linked system and can be





Phone: +49 2736 4976 0
E-mail: info@hessgroup.com

We put concrete into shape