



INLINE QC

Automatic quality control

INLINE QC

Automatic quality control

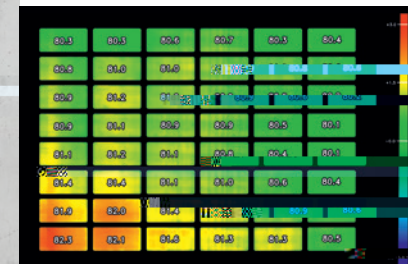
Optimize your concrete block and paver production with automatic non-contact quality control: the Inline QC.

Inline QC minimizes the time required for manual checks thanks to real-time monitoring and evaluation. Each production batch undergoes a full surface inspection by means of precise defect detection to enable the highest quality standards of the concrete blocks and pavers.

The height measurement with color indication ensures intuitive recognition of product quality through objective evaluation. Statistical evaluations can help you fully analyze your production processes.

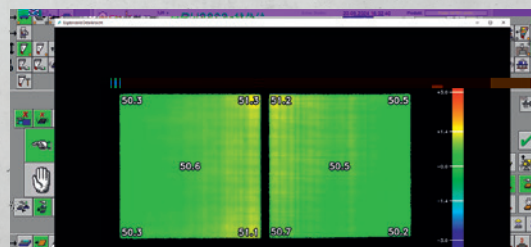
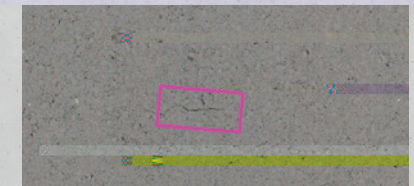
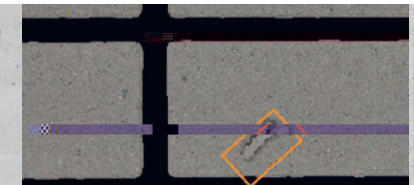
HESS Group GmbH

Freier-Grund-Strasse 123
57299 Burbach-Wahlbach, Germany
Phone: +49 2736 4976 0
E-Mail: info@hessgroup.com
www.hessgroup.com



PERFORMANCE FEATURES

- **Automatic quality control**
with maximum precision in defect detection
- **Height measurement**
with color indication over the entire layer of stones
 - Height measurement accurate to 0.5 mm
 - For product heights from 25 mm to 500 mm
 - For products with bevel up to 150 mm deep for heights up to 300 mm
- **Precise defect detection**
 - Defect detection from an area of 1 mm²
 - Lift-offs from 0.5 mm height difference
 - Cracks from 0.5 mm width
 - Differentiation between surface pollution and defects
- **Accuracy of 99%**
- **Integration into the machine visualization**
- **Integration into the production statistics**
 - Heights
 - Colors and color gradient
 - Defect rates
 - Surface structures
 - Image representations
- **Customization**
 - 1, 3 and 5 height values per block
 - Visualization for sorting recommendation on the dry side
- **Approx. dimensions: 1,400 x 2,300 x 3,050 (L x W x H)**
- **Expandable with associated robot sorting**



| | Inline QC (with 3 scanners) |
|---|--------------------------------|
| Detection area w x l [mm] | 1,500 x 1,450 |
| min. product height [mm] | 25 |
| max. product height [mm] | 500 |
| Precision of geometric measurement [mm] | 0.5 |
| Maximum detectable chamfer depth [mm] | 150 |
| min. detectable size of lift-offs and (edge) break-outs [mm ²] | |
| | |
| | |
| | |
| | |
| | |